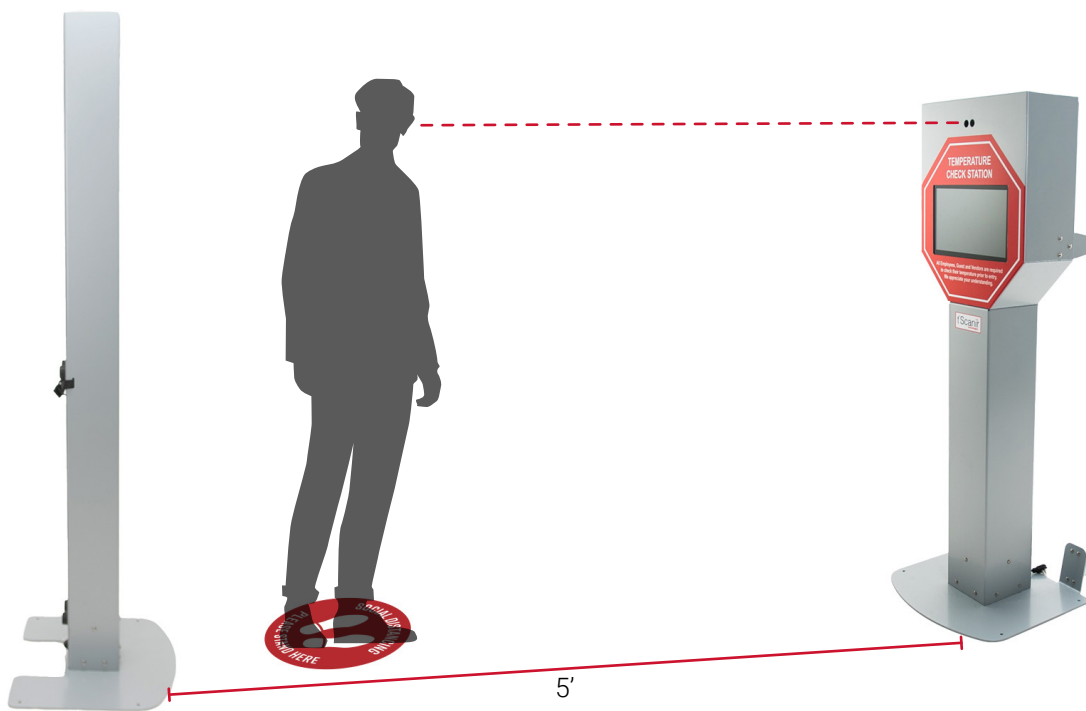


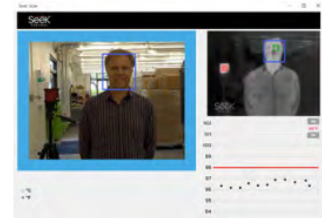
Start Future-Proofing Your Work Place Environment

Mobile Thermal Temperature Check Station

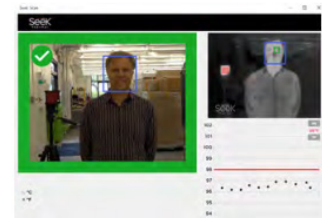
The rise of Covid-19 has brought about a “New Normal” where businesses must be much more focused on employee health & safety. As businesses re-open doors and on-site work resumes, proactive health & wellness strategies need to be implemented. Automatic Thermal Temperature Screening stations are your first line of defense. They quickly and effectively scan people; flagging people who have signs of an elevated temperatures.



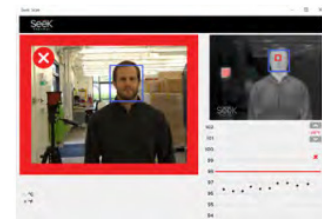
Model #: tScanir 206



ANALYZING SKIN TEMPERATURE



BELOW ALARM TEMPERATURE



ABOVE ALARM TEMPERATURE

Simple

- Plug and play set-up
- Pass/fail operation
- No Internet connection required
- Constant auto calibration
- Full service support

Safe

- Meets FDA requirements*
- HIPPA compliant*
- No face mask removal
- One (1) person at a time
- No-trip base plate
- Fever indicative technology

Accurate

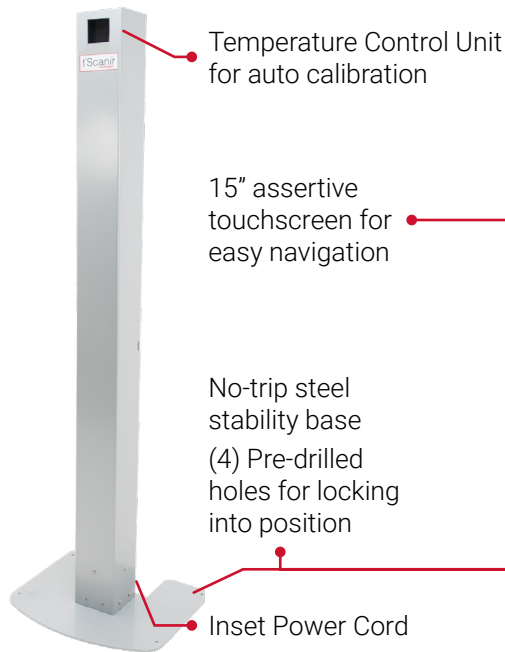
- Elevated body temperature scan
- 31k+ temperature scans/reading
- Accuracy $\pm 0.5^{\circ}\text{F}$ ($\pm 0.3^{\circ}\text{C}$)
- WKU certified online course included - \$495 value

Mobile

- Ergonomic design
- Small shipping footprint
- Loop handle
- 3" rubber castors
- Easy manageability; size/stature

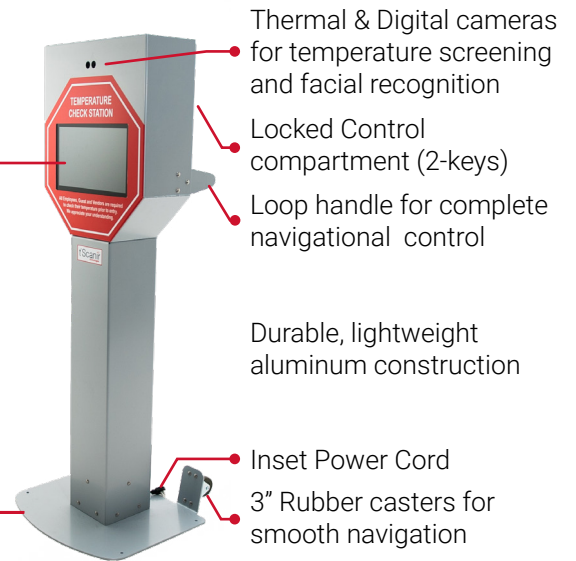


For more information go to:
www.tscanir.com or call us at
855-tScan-84 (855-872-2584)



Temperature Control Unit Tower

DIMs: 23" (l) x 19.4" (w) x 75.4" (H)



Control Tower

DIMs: 23" (l) x 30.6" (w) x 61.25" (H)

t°Scanir Mobile Thermal Temperature Station	
Screens body temperature	✓
Over 31,000 temperature readings per scan	✓
Plug & play, fast installation	✓
Promotes social distancing	✓
FDA approved thermal camera	✓
Customizable temperature alarm	✓
Email alerts for high temperatures	✓
Mobile, self-service design	✓

- Works behind your firewall – no internet connection required
 - Optional daily image storage
 - Fast scan times - process up to 1,500 people per hour
 - Promotes social distancing
 - Attendant and scanees remain greater than 6-feet (1.8 meters) apart
 - Face masks may be worn during scan
 - Scan one person at a time
- Added Value:**
- Free consultation service**
- Determine the best Temperature Check Station and placement for your needs
- Free Policy & Procedure Consultation**
- We help you document it
- Free Education**
- Exclusive access to Elevated Body Temperature Thermologist Certified Training from Western Kentucky University. \$495 Value

*FDA: Enforcement Policy for Telethermographic Systems During the Coronavirus Disease 2019 (COVID-19) Public Health Emergency, April 2020

For more information go to:
www.tscanir.com or call us at
855-tScan-84 (855-872-2584)